

Netus Eyes & Pro PC & mobile app

User Manual

1. Introduction

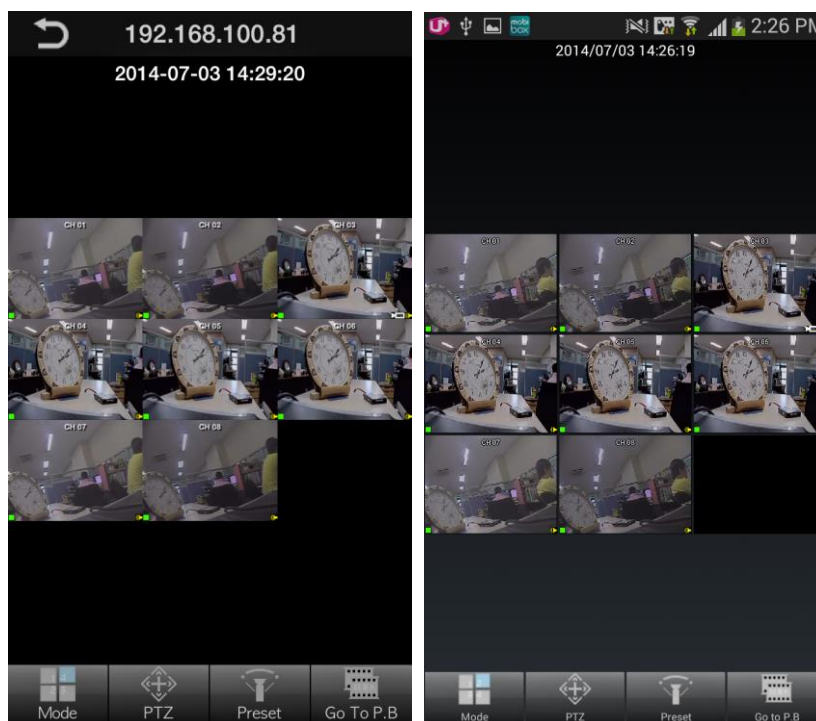
1.1. Introduce

This SW has been developed for remote live surveillance of DVR through Smart Phone. Through the SW user can do live monitoring, Play audio, PTZ control, Preset control, Playback and other advanced features.

1.2. Features

This SW can be installed on iOS (iPhone, iPad) and Android OS. User can download the SW from each mobile market as free (App store, Android Play Store). Supported functions are

- 1/4/9/16CH live view mode.
- 4G connection.
- Wi-Fi connection.
- Live Audio surveillance.
- Pan/Tilt/Zoom support
- PTZ preset control
- Remote playback from DVR's recording data.
- Other advanced features



2. Installation

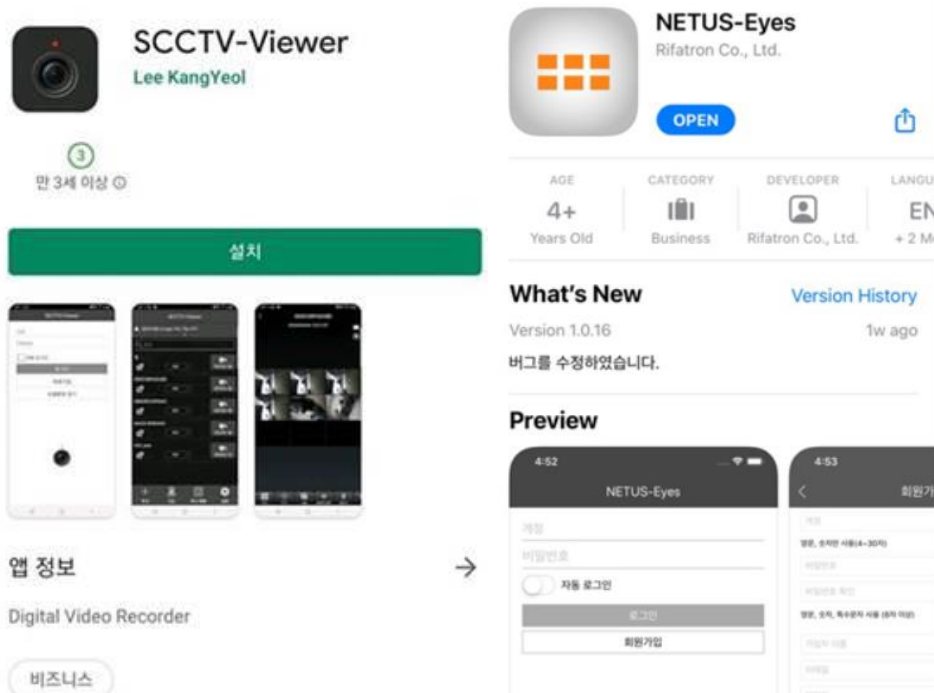
2.1. System Requirements.

The mobile device must be meet below specification or higher for proper running the S/W.

OS	iOS (iPhone, iPad)	Android
----	--------------------	---------

2.2. How to install

1. Run the mobile market on mobile devices (App-store, Android Play Store)
2. Type 'NETUS-Eyes' or 'SCCTV-Viewer' on search box.
3. Select 'NETUS-Eyes' or 'SCCTV-Viewer' item from the list and download it.



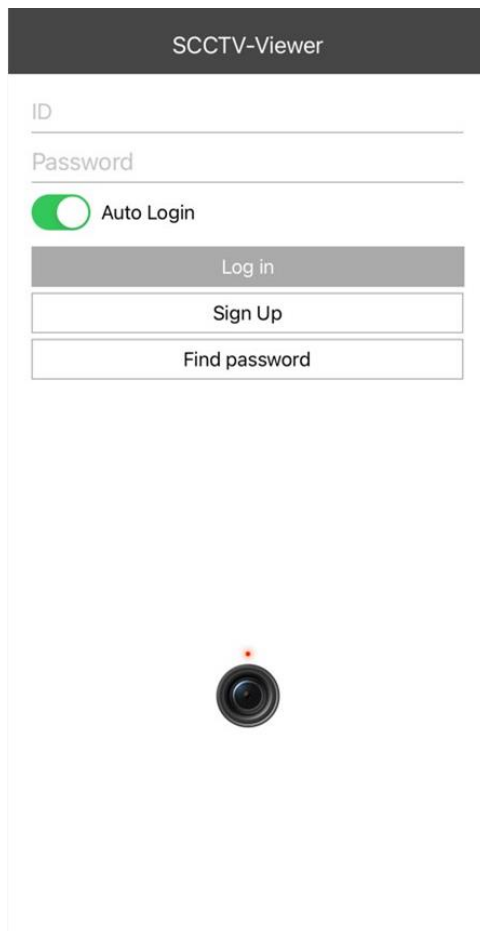
4. Each Smart phone will create 'SCCTV-Viewer' icon.
5. Now click the icon to run the SW.

3. Log In

Log in step required proper user information to access recorder.
There are two types of creating ID/PW as below.

- Create ID/PW on mobile app
- Create ID/PW on local DVR/NVR

After creating the ID/PW in local DVR, user can put their ID/PW on log-in page in app.



3.1. Creating ID/PW on recorder

1. To use mobile app, user should create ID/PW on DVR.
2. DVR should be connected with network through Ethernet port.
3. Users are allowed to register the device on the server to use client service through the CLOUD menu below.



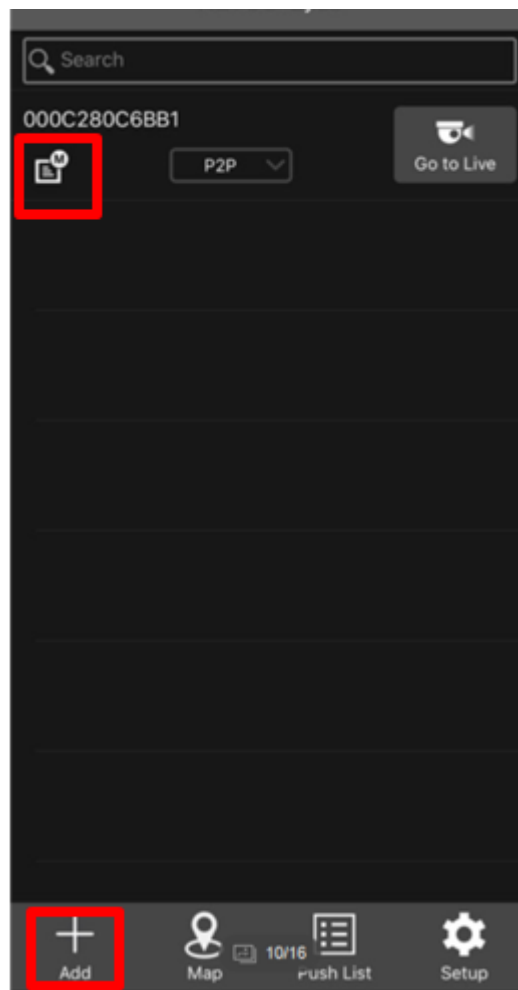
4. When user gets into the CLOUD menu, there are methods to register the device with user's account such as QR code and blanks to enter the ID/PW.
- Server URL: the server saved the data
 - User ID/PW: User can create their ID/PW on mobile app. Otherwise user can easily make the ID/PW with Mac as below.



5. Sign up through Mac: User can sign up through the Mac without mobile app. The default ID is the part numbers of the Mac and password is 00000. After the registration on the CLOUD menu, user can log in with this ID/Password on the mobile app. We recommend changing the default password on the app. (available only with the app)

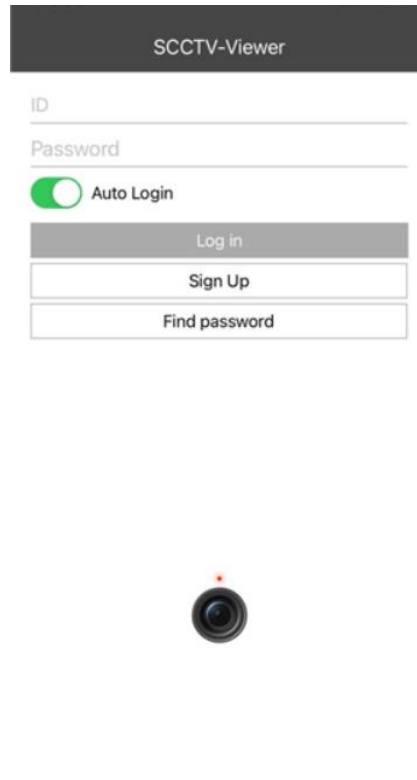


6. User ID / Password: When user doesn't register the device with their mac, it needs to sign up on mobile app and then put their ID/Password on the CLOUD menu of the recorder.
7. Duplicate registration is not allowed when user register the recorder with following two ways.
 - Sign up on the mobile app → register the ID/Password on CLOUD menu
 - Sing up through Mac on CLOUD menu of recorder directly.
8. After log-in user can scan the QR code on the CLOUD menu of recorder with + Add button to register. Then the recorder will be on the list.
9. With the 'M' menu at the left side on the list, user can check the menu list to utilize with the app.
10. To check the live monitoring, press 'Go to Live' button' as below.



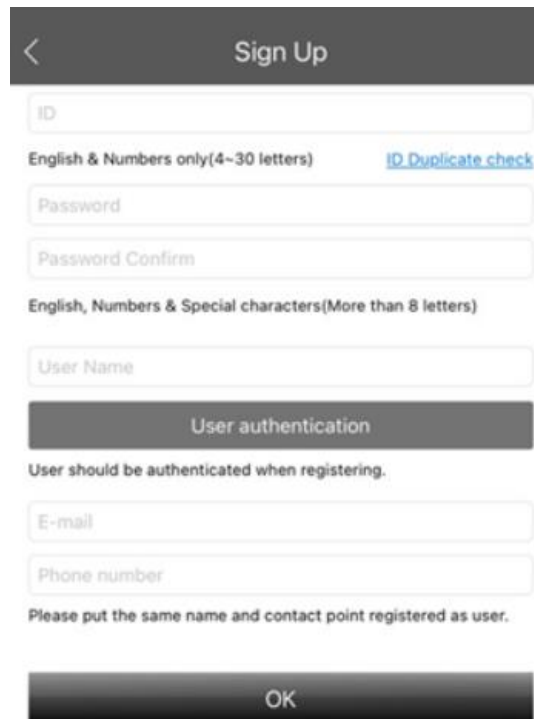
3.2. Creating ID/PW on mobile app

Creating ID/PW on mobile app can be limited depending on the version of DVR firmware. Sign Up button at the first page.

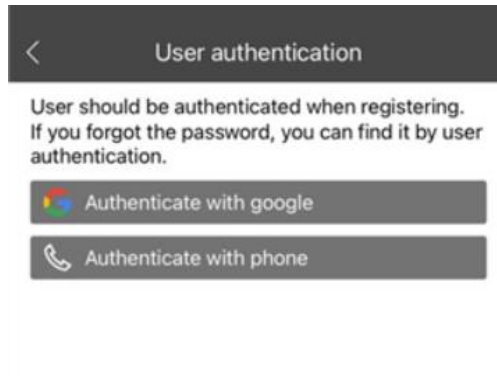


The screenshot shows the SCCTV-Viewer mobile app interface. At the top, there is a dark header with the text "SCCTV-Viewer". Below the header, there are two input fields: "ID" and "Password". Underneath these fields is a toggle switch for "Auto Login", which is currently turned on. Below the toggle switch are three buttons: "Log in" (a grey button), "Sign Up" (a white button with a grey border), and "Find password" (a white button with a grey border). At the bottom of the screen, there is a small camera icon.

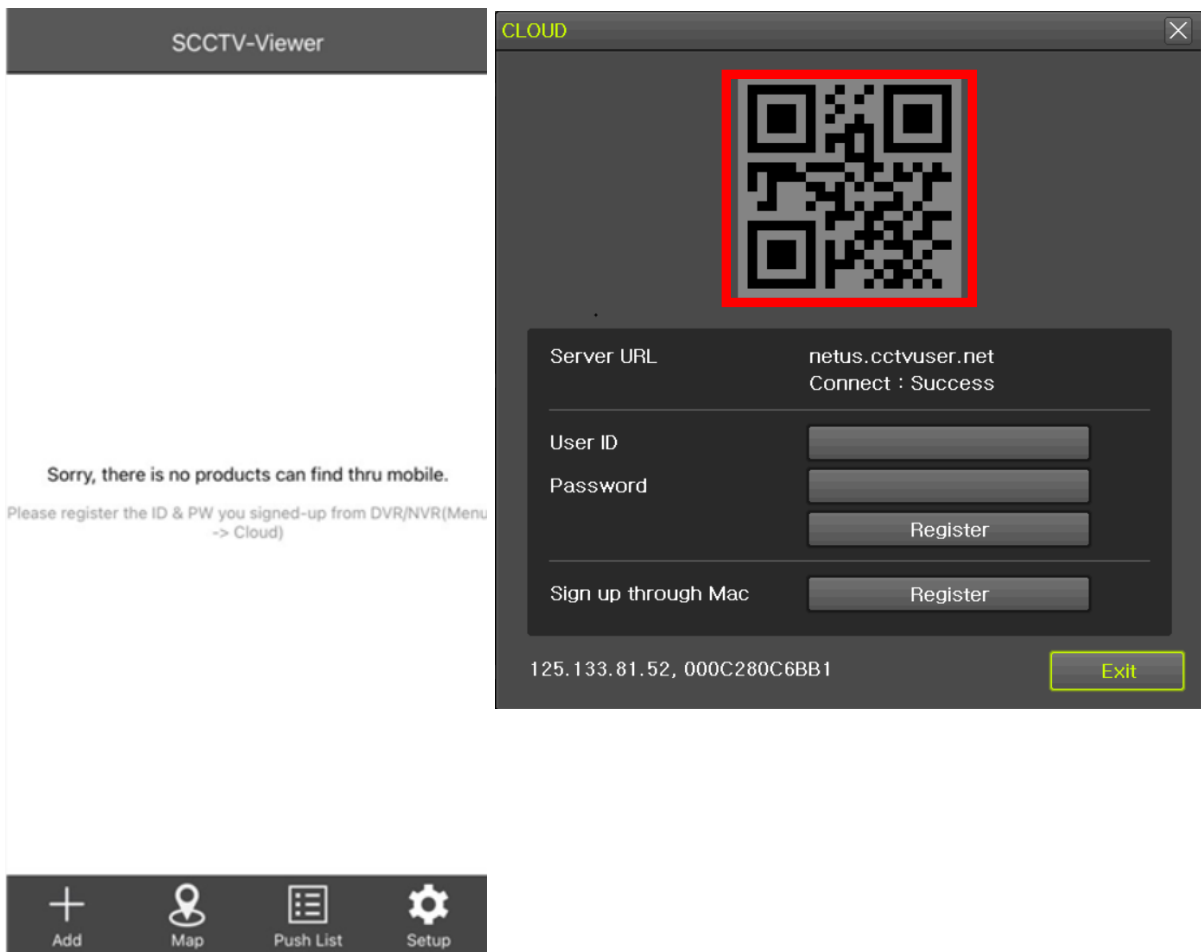
Put all the information at the Sign Up page and authenticate with your Google account. The users are not in Korea, only Google account authentication is available.



The screenshot shows the "Sign Up" screen in the mobile app. At the top, there is a dark header with a back arrow and the text "Sign Up". Below the header, there are several input fields: "ID" (with a note "English & Numbers only(4-30 letters)" and a link "ID Duplicate check"), "Password", "Password Confirm", "User Name" (with a note "English, Numbers & Special characters(More than 8 letters)"), "E-mail", and "Phone number". Below the "User Name" field is a dark button labeled "User authentication". Underneath this button is the text "User should be authenticated when registering." Below the "E-mail" and "Phone number" fields is the text "Please put the same name and contact point registered as user." At the bottom of the screen, there is a dark button labeled "OK".



After the login, scan the QR code on DVR to register the device.



4. Live monitoring

4.1. View Mode

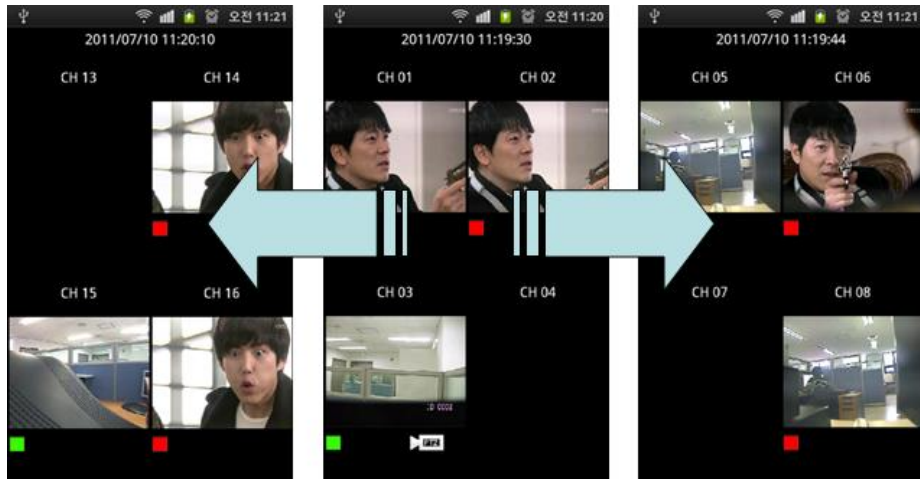
Live image will be displayed after complete to make a connection with DVR.

4.1.1. Change view mode.

1. Press Mode button on live screen. Display mode will be changed as 1/4/9/16 view mode.



2. To change channels, slide the screen to left or right side by finger.



3. To make a full screen, just double click a channel. Next double click will restore the screen from full screen mode.



4.1.2. Live Audio

1. Audio icon will be display at bottom of each channel when the audio connected.



2. Audio can be played on one channel full screen mode.
3. Audio will stop to play when view mode change from full screen to 4/9/16 view mode.

4.2 PTZ control

This function controls camera's Pan, Tilt, Zoom from remote site.

4.2.1 Pan/Tilt

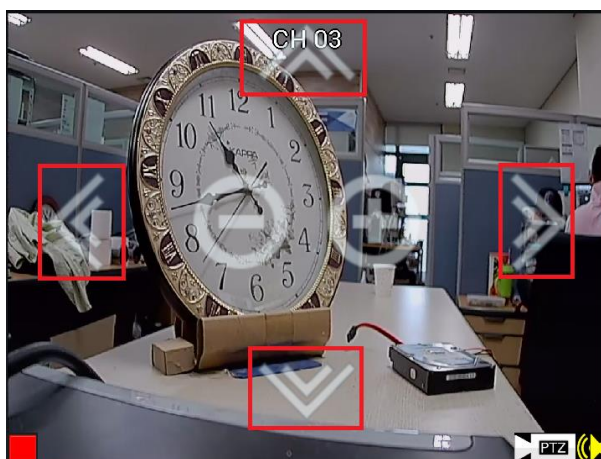
1. Camera icon will be display when the channel connected with PTZ cameras.



2. Double click a PTZ channel to change a full screen mode.
3. Select PTZ button at bottom of screen.

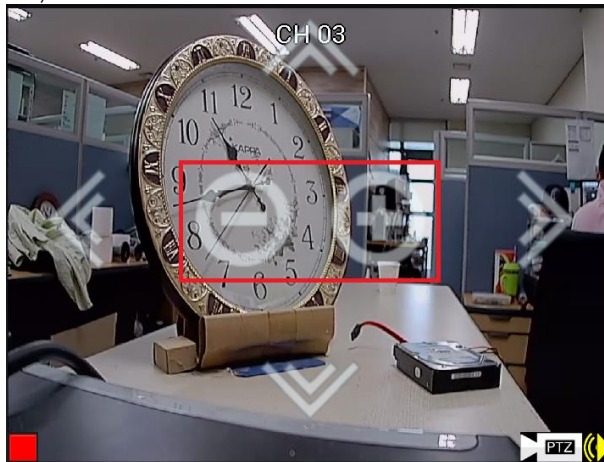


4. Control icon will be displayed on screen.



4.2.2 Zoom In / Out

1. Press +, - button on screen to Zoom In and Zoom Out

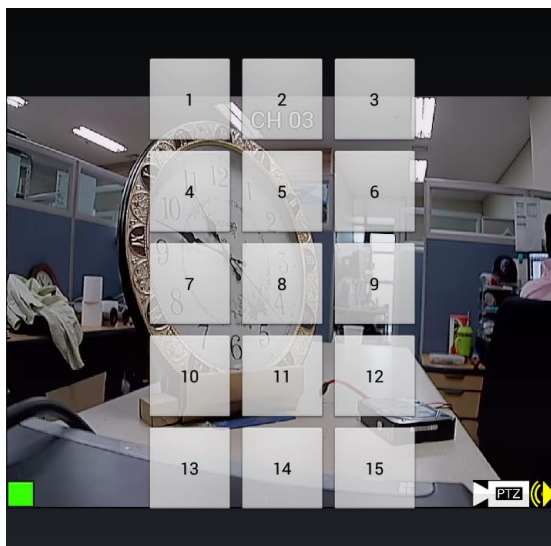


4.2.3 PTZ preset

1. Double click a PTZ channel to change a full screen mode.
2. Select a Preset button.



3. Preset select buttons will be display on screen.



4. Select a preset button between 1~15, Camera will be moved to memorized position

5. Play back

5.1. Go To P.B

1. Select the Go To P.B button on Live Monitoring mode



2. Playback mode window will be shown.



5.2. Play back View Mode

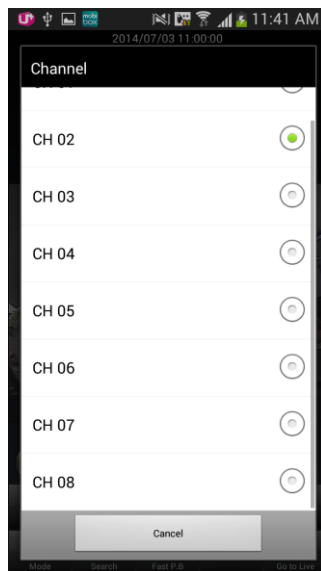
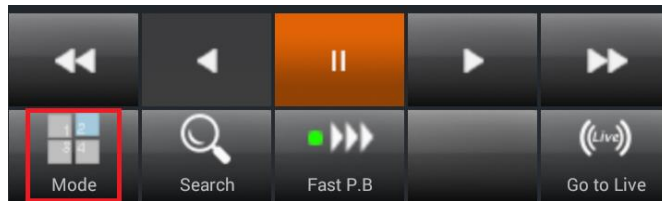
Playback mode windows will be shown with the 1CH monitoring mode.

5.2.1. Change View mode.

User can search the recorded data as 1 CH monitoring mode.

1. Mode

Select the mode button then channel mode window will be shown
It is used to view the recorded data of each channel



2. To change channels, slide the screen to left or right side by finger.

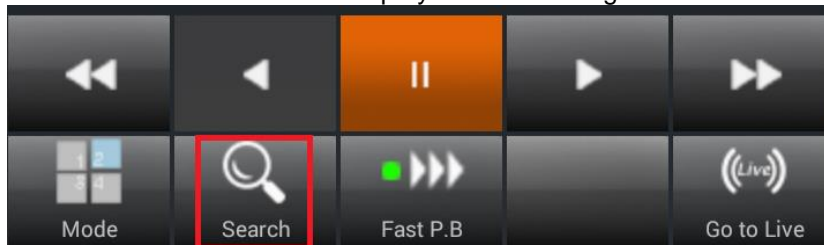
5.2.2. Change View mode. (Fast P.B)

Search the recored data with Fast P.B features. Other functions are same with the Playback monitoring mode.

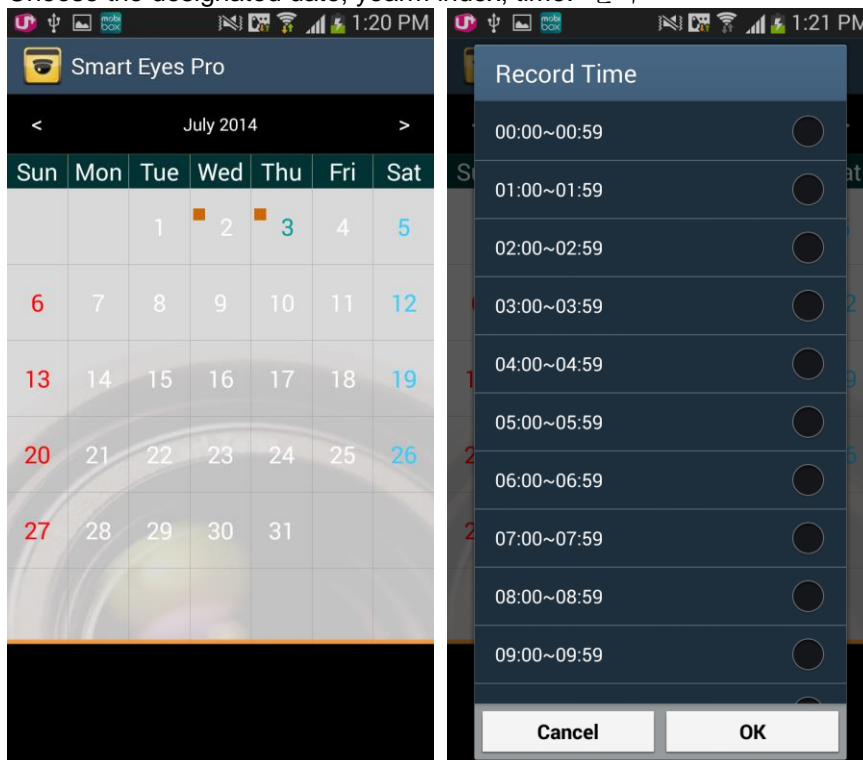
5.3. Calendar Search

It is used to search the recorded data of specific date by selecting the Calendar

1. Select the Search mode on the playback monitoring mode.



2. Choose the designated date, yearm index, time. 한다

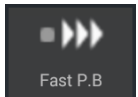
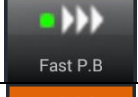



3. Selected the wanted item and click the [OK] button to view the recorded data..

5.4. Fast P.B

The remote monitoring quality depends on the recording and the network setting. Fast. P.B function is used when playback speed are limited by the local network environment, Remote playback can be shown as much better speed by reconfiguring image resolution and the frame.

5.4.1 Fast P.B Status

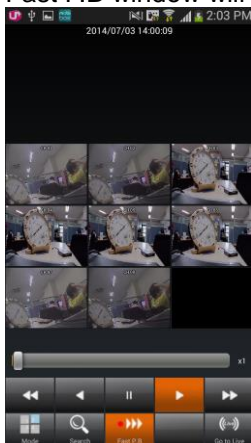
 <p>Fast P.B</p>	<p>Offline</p> <ol style="list-style-type: none"> 1. DVR doesn't support the Fast P.B 2. Data are used on the Local playback mode. 3. Other user use the Fast P.B feature
 <p>Fast P.B</p>	<p>Online</p> <ol style="list-style-type: none"> 1. Fast P.B is available.
 <p>Fast P.B</p>	<p>Active</p> <ol style="list-style-type: none"> 1. Fast P.B is working

5.4.2 Fast P.B

1. Select the Fast P.B button when the Fast P.B function is online.



2. Fast P.B window will be shown.



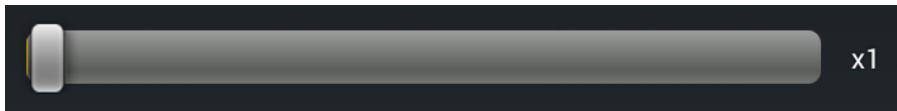
3. Fast P.B mode will be closed by select the Fast P.B button again.

5.5. Playback control

1. Each button to change the phase of the playback speed/play backward/forward.
- 2.



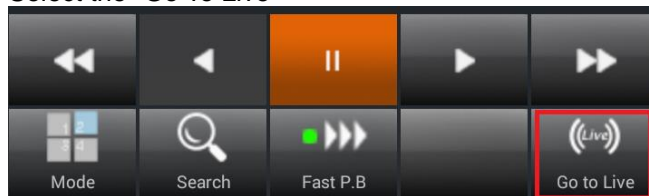
3. Moving the time bar to playback from the specific time.



5.6. Go To Live

It is used to change the playback view mode to Live Monitoring mode..

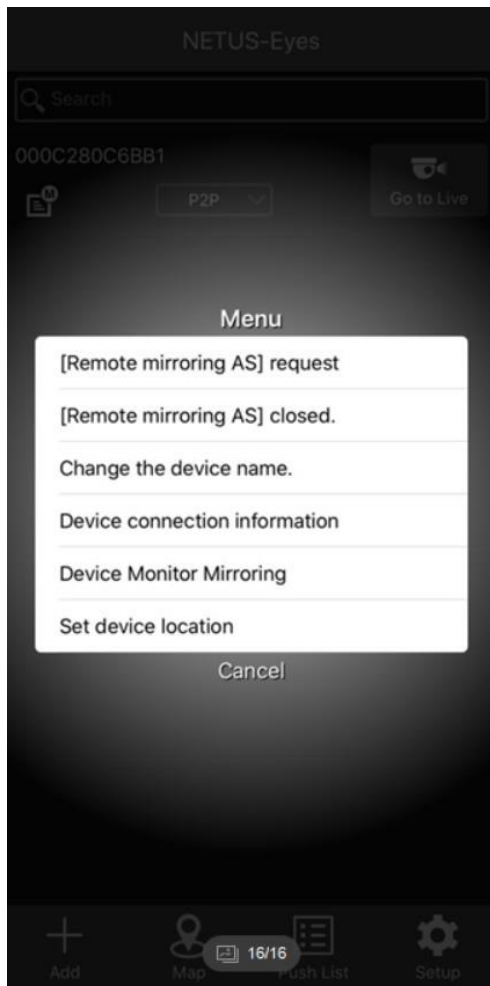
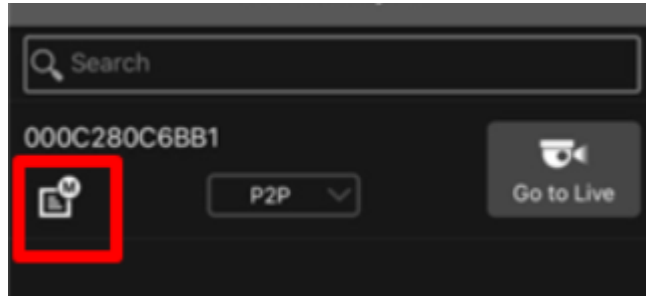
1. Select the "Go To Live"



6. Other features

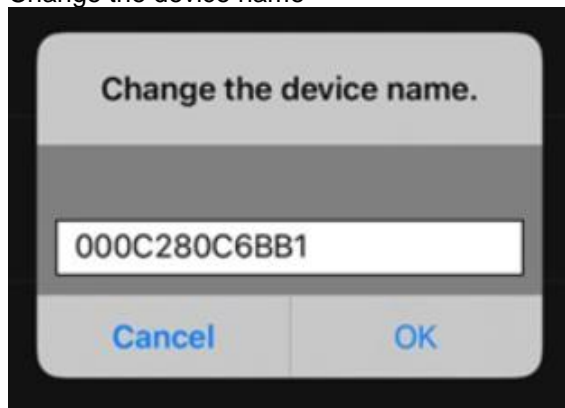
6.1. Menu button

Each device on the list has menu button as below.



[Remote mirroring AS] request/ closed: User may be limited to access to this menu as it is for pre-paid option.

Change the device name

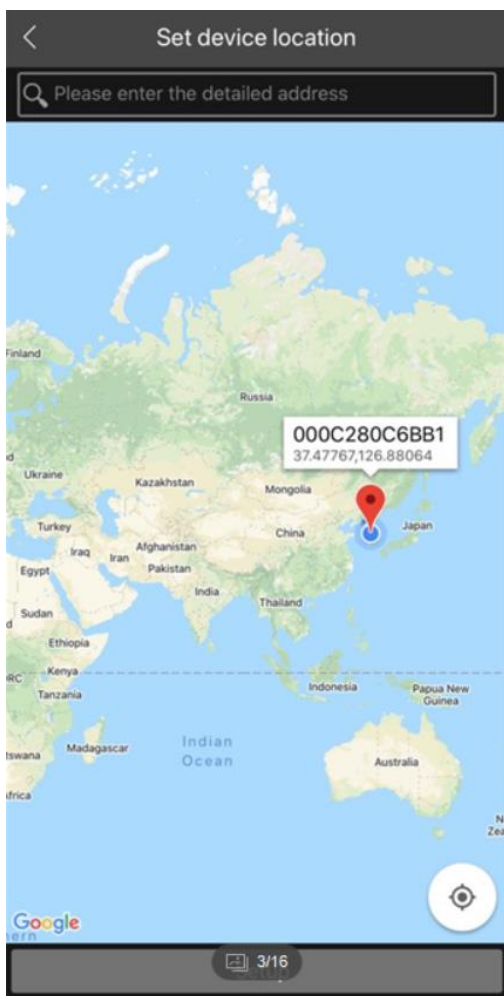
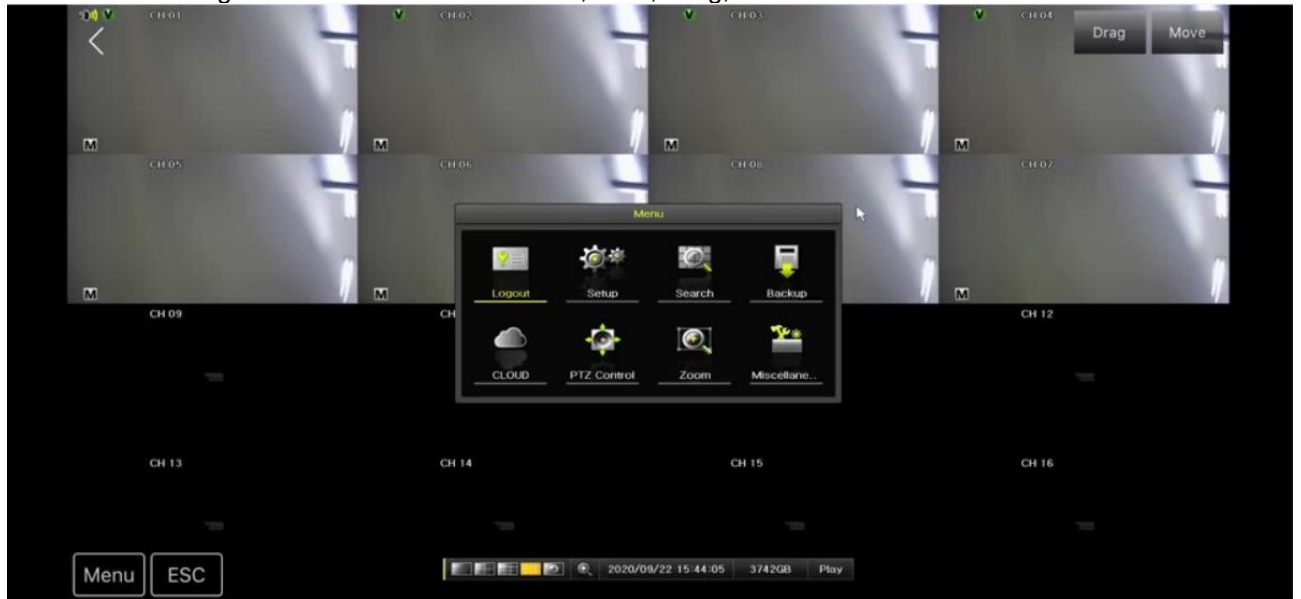


Device connection information



Device Monitor Mirroring

: It allows mirroring of the recorder's monitor and user can operate remotely with this menu without recorder. Followings are available buttons: Menu, ESC, Drag, Move



Set device location

: It allows to set the recorder's location with the google map unless users are not allowed to access to the current location on mobile phone.

Sub user setting

ID

English & Numbers only(4~30 letters) [ID Duplicate check](#)

Password

Password Confirm

English, Numbers & Special characters(More than 8 letters)

User Name

Authority

- Security guard
- Live monitoring
- Playback
- Backup
- Setup
- PTZ
- Upgrade

Device selection

- All devices

Device list

OK 1/16

Device management

: User can make the Sub-user setting with this menu.

: After setting the authority on the check box with the sub-user's account information, Sub-user can access to the user's recorder accordingly.